

Hours of Operation

Monday – 10 AM to 7 PM
Tuesday – 9 AM to 5 PM
Wednesday – 9 AM to 7 PM
Thursday – assessment only, hours may vary
Friday – 9AM to 3PM
Saturday – 9 AM to 3 PM

Available by appointment only
We are closed during College semester breaks and holidays

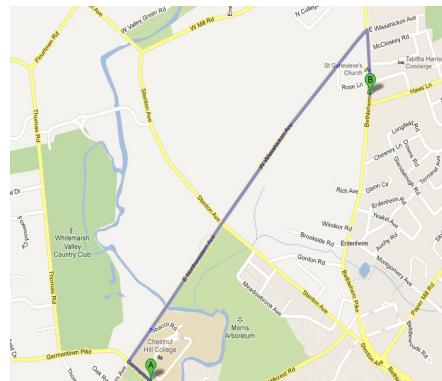


Contact information:

For more information contact:

Psychological Services Clinic
of Chestnut Hill College

1107 Bethlehem Pike
Suite 212
Flourtown, PA 19031
215.233.1914
www.chc.edu/psc
email: clinic@chc.edu



Location

The Psychological Services Clinic of Chestnut Hill College is a community mental health clinic located in Flourtown, PA, right outside of Philadelphia. We are on Bethlehem Pike between Rose Land and Haws Lane, with nearby SEPTA stops for the 94 and "L" bus routes. The office can be accessed through the back entrance. The clinic is completely accessible. For directions and a map, visit our website at www.chc.edu/psc



CHESTNUT
HILL
COLLEGE

Psychological Services Clinic of Chestnut Hill College



Psychotherapy and
Assessment Services



Affordable Community Mental Health Services

Psychological Services Clinic of Chestnut Hill College (PSC-CHC) is a community mental health clinic whose mission is to provide affordable, excellent psychotherapy and assessment services to a diverse range of individuals of varying ages. An important focus of our work is helping individuals and families improve functioning in their relationships, schools, jobs and day-to-day lives. All mental health services are performed by doctoral psychology practicum students, pre-doctoral interns and post-doctoral fellows trained in Chestnut Hill College's Psy.D. Program. Licensed clinical psychologists on the faculty of the Chestnut Hill College Department of Professional Psychology supervise all clinical work and co-sign all assessment reports.



Psychotherapy Services

PSC-CHC provides individual and family outpatient treatment for difficulties including:

- Anxiety, depression and other mood disorders
- Problems with adjustment and stress
- Relationship, couple and family problems

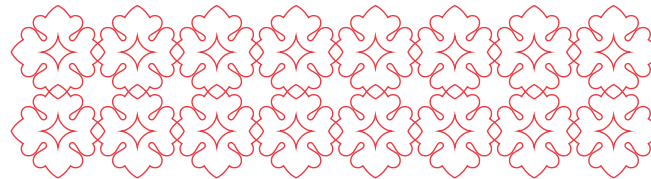
All treatment is individualized based on the specific client's needs.

Psychological Assessment Services

Our clinic performs comprehensive psychological evaluations of cognitive functioning, memory, academic achievement, personality, behavioral and other areas of psychological and psycho-educational functioning. We work with children, adolescents, college students and adults to assess problems that relate to:

- Learning disabilities
- Academic/vocational achievement difficulties
- Attention deficit disorders
- Psychological adjustment difficulties and personality functioning

In addition, we provide autism spectrum diagnostic testing, as well as intelligence (IQ) testing required for private school admission. Evaluations all result in an individual report, which clarifies the nature of problem areas and difficulties, identifies personal strengths, and provides clear, practical recommendations and strategies.



Other Mental Health Services

PSC-CHC does not have a psychiatrist on staff but your clinician can discuss referrals with you if appropriate. Our outpatient clinic is unable to provide emergency, crisis or acute-need mental health services.

How to Start the Process

Please call 215.233.1914, at which time we will gather basic information and review our sliding fee scale with you. You will then be contacted for a brief intake interview by a graduate assistant or student clinician, who will talk with you to determine if PSC-CHC is a good match for you and/or your family. At that time, we will also inform you of the amount of time that you should expect to wait to be contacted by a clinician to schedule an initial appointment. All interactions with our clients are confidential and based on treating each individual with respect, dignity and professionalism. We welcome your call and look forward to working together with you!



We are committed to making services affordable to all. Thus, fees are based on a sliding scale, depending upon the client's income. We accept cash or checks. We do not accept any insurance. Please contact the clinic for more information.